

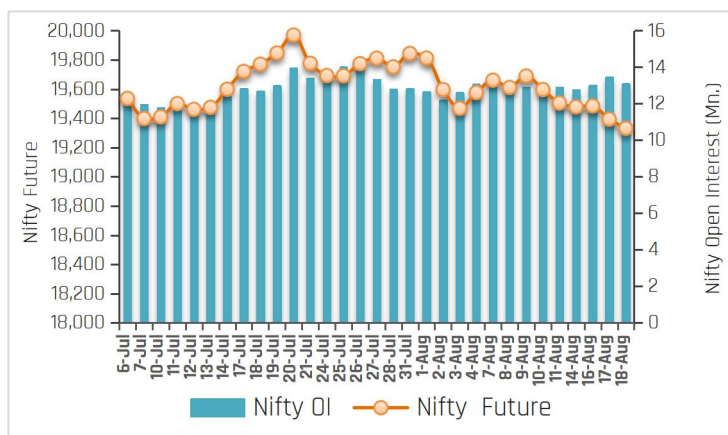
19-Aug-23

PARTICULARS	Last Closing	Previous Week	% Change
NIFTY SPOT	19310	19428	-0.61
NIFTY FUTURES	19332	19504	-0.89
BANKNIFTY SPOT	43851	44199	-0.79
BANKNIFTY FUTURES	43965	44464	-1.12
NIFTY PCR	0.98	0.91	7.69
NIFTY PCR-VOL	0.95	0.98	-3.06
NIFTY OI(In Mn)	13.08	12.89	1.47
BANKNIFTY OI(In Mn)	2.43	2.36	2.97
INDIA VIX	12.14	11.52	5.38
NIFTY BASIS POINTS	21.35	76.05	-71.93

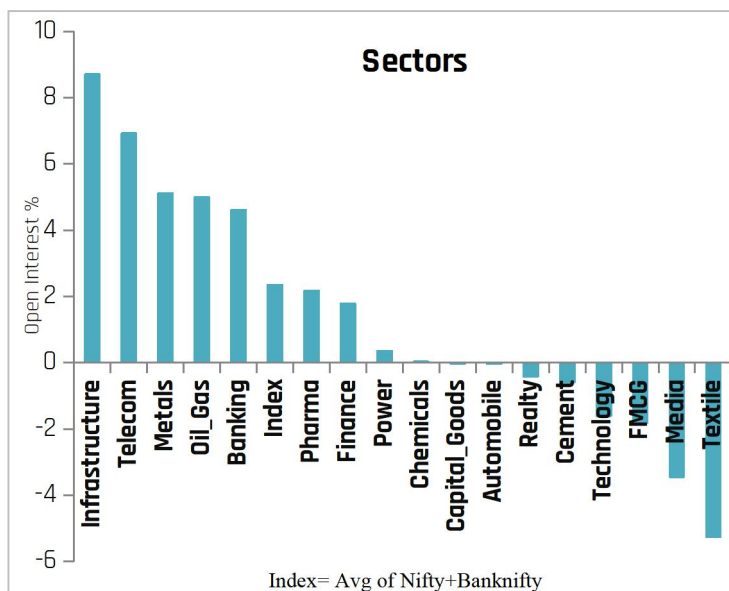
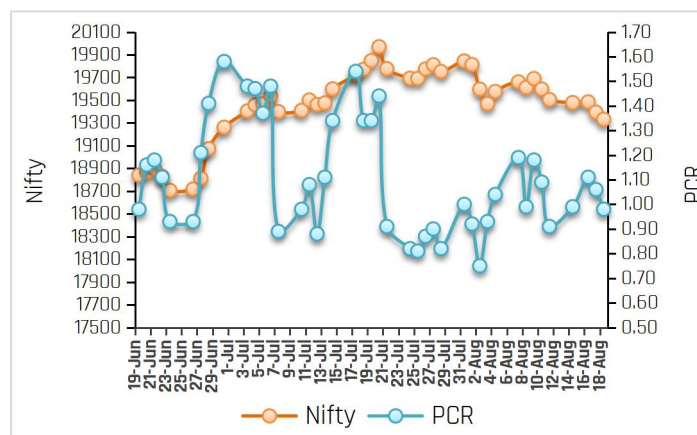
Index Outlook

Domestic equity benchmark indices ended the truncated trading week with modest losses. The sentiment in the Indian equity market was weighed down by concerns about fresh credit risk in China, worries about higher interest rates in developed economies for longer periods, and the ongoing selling by foreign investors. Finally, Nifty Future settled the week on negative note at 19332 down by 0.89% (WoW) with addition in open interest of 1.47% (WoW) indicating neutral bias for short term. The volatility index, India VIX shoots up by 5.38% and closed at 12.14 levels. We expect volatility will remain continue due to global cues. Another derivatives indicator, Nifty Put-Call ratio currently stands at 0.98 (WoW). Technically, On a daily scale, the index has broken the support of the 21-DEMA and sustained below it. The 21-DEMA is currently placed near 19,490, which will act as the first hurdle for the index, followed by 19,650. The immediate support for the index is situated close to 19,265, where the 50-DEMA is placed. If the index sustains below that, it could retrace back towards the major breakout point of 19,000-18,900. For the short term, 19,000 and 18,900 will serve as support levels, whereas 19,490 and 19,650 will serve as resistance levels. Going forward, the Rupee movement against the Dollar, bond yields movement, macroeconomic data, Fii's flow, progress of monsoon, geopolitical worries, and crude oil price movement will dictate the trend on the bourses next week.

Nifty OI Trend



Nifty FutVsPcr



Sectoral Activity

- Last week, **Infrastructure, Telecom, Metals, Oil&Gas sand Pharma** sectors saw open interest addition. Top names included **INDIGO, ADANI PORTS, TATACOMM, INDUSTOWER, HINDCOPPER, SAIL, RELIANCE, IGL, METROPOLIS and DRREDDY.**
- Textile, Media and FMCG** sectors witnessed open interest unwinding due to short covering in stocks.
- In the **Banking** space, **KOTAKBANK, CUB, INDUSINDBK, CANBK, BANKBARODA and HDFCBANK** witnessed short build-up, whereas short covering seen in **IDFCFIRSTB, FEDERALBNK and AXISBANK.**
- This week, some buying can be seen in **DRREDDY, MARUTI, HINDUNILVR, LTTS, RELIANCE, SYNGENE, COLPAL and MANAPPURAM** while selling pressure can be seen in **INDIGO, UPL, and INDUSTOWER.**
- From sector space, **Infrastructure, Textile, Telecom, Banking, Technology, Pharma, FMCG, and Power** stocks are likely to remain in focus in the forthcoming week.

Weekly Derivatives Synopsis

19-Aug-23

Stocks to Watch Out (Weekly)

Long Build-up			
Symbol	Price	OI Change	Price Change
ESCORTS	2,834.15	44%	9%
ADANIPORTS	836.35	8%	4%
TRENT	1,973.85	5%	4%
PVRINOX	1721.75	2%	5%

Long Unwinding			
Symbol	Price	OI Change	Price Change
INDIACEM	238.05	-14%	-6%
ABB	4,282.90	-12%	-6%
GRANULES	290.85	-11%	-3%
IBULHSGFIN	157.85	-8%	-4%

Short Build-up			
Symbol	Price	OI Change	Price Change
INDIGO	2,457.20	45%	-3%
MUTHOOTFIN	1,237.40	44%	-8%
HINDCOPPER	140.80	31%	-11%
METROPOLIS	1,342.25	22%	-3%

Short Covering			
Symbol	Price	OI Change	Price Change
BATAINDIA	1,720.25	-17%	5%
RECLTD	233.65	-16%	5%
MFSL	873.75	-12%	4%
PEL	1,049.75	-6%	3%

Weekly Recommendation

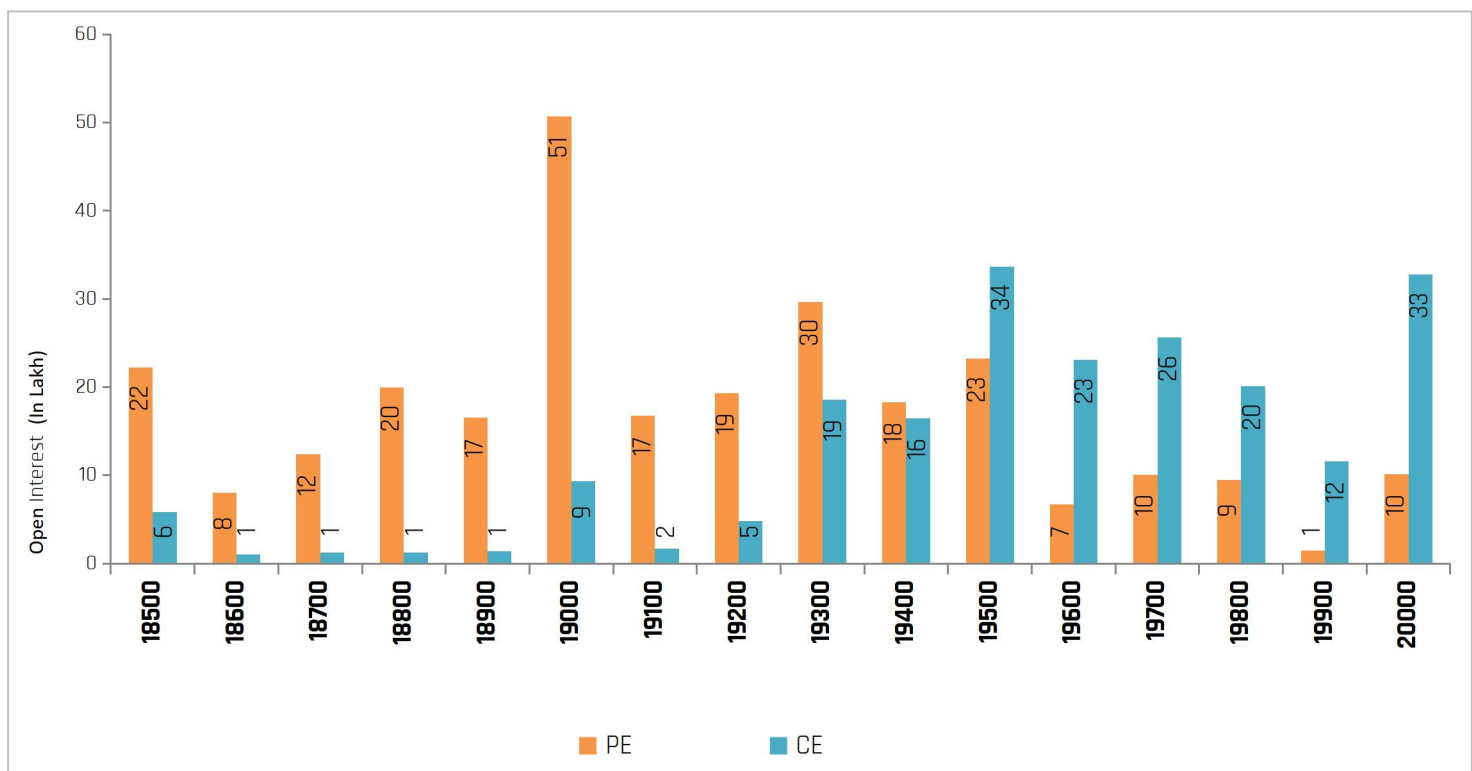
LTTTS(4270.55) - The stock has seen open interest unwinding of 8% along with positive price action indicating short covering. The stock can be bought in the range of 4240-4250 with a stop loss of 4180 on closing basis for a target of 4310-4340.

Target: 4340 Stop Loss: 4180

HINDUNILVR (2556.20) - The stock has seen open interest unwinding of 8.81% along with positive price action indicating short covering. The stock can be bought in the range of 2530-2535 with a stop loss of 2490 on closing basis for a target of 2580-2610.

Target: 2610 Stop Loss: 2490

Nifty Options Snapshot



Weekly Derivatives Synopsis

19-Aug-23

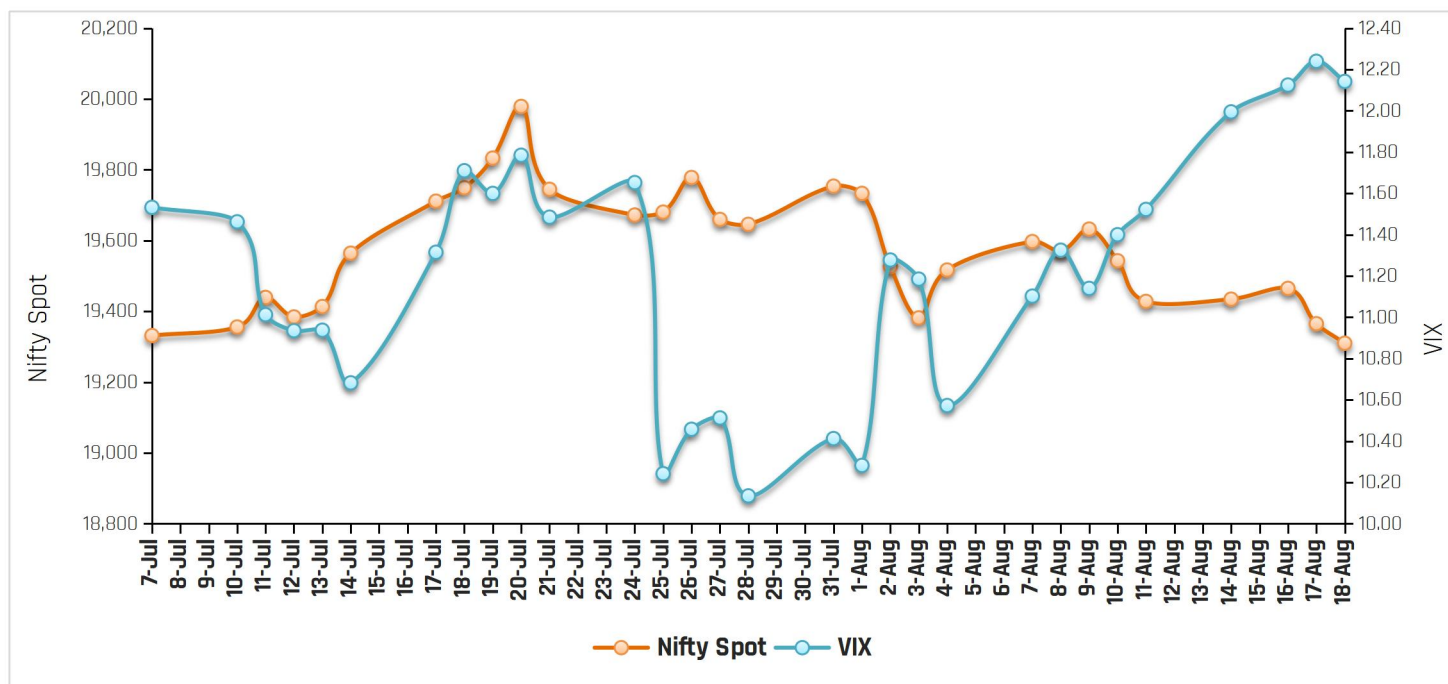
FII Stats (5 Days Trend)

(Rs. Cr.)	18-Aug	17-Aug	16-Aug	14-Aug	11-Aug
INDEX FUTURES	1071	-216	221	-440	-100
INDEX OPTIONS	-499	38143	-5215	-5295	6833
STOCK FUTURES	-2125	-3556	-1282	-1120	-1584
STOCK OPTIONS	65	-232	11	-32	-193

FII Open Interest Activity (Long & Short Ratio)

Date	Index Fut: Long/Short	Index Option: Long /Short	Index put: long /Short	Stock Fut Long/Short
10-Aug	0.69	1.34	1.67	0.96
11-Aug	0.67	1.24	1.49	0.94
14-Aug	0.64	1.42	1.49	0.93
16-Aug	0.65	1.31	1.46	0.92
17-Aug	0.65	1.42	1.98	0.88
18-Aug	0.73	1.23	1.36	0.86

NIFTY VS INDIA VIX (Last 30 Days Trend)



Observation: Any rise in India Vix this week would lead to either side movement in the Index. As per the above chart, India Vix has strong support at around 10.00 and resistance stands at 16.00.

Weekly Advance Decline Ratio (Nifty Stocks)

Advances	07
Declines	31
Unchanged	12

Technical View

Nifty 18-Aug, Daily Chart



- The index began the week on a negative note and continued its weakness throughout the week. As a result, the index registered a low of 19,254 and settled for the week on a negative note at 19,310.
- On a daily scale, the index has broken the support of the 21-DEMA and sustained below it. The 21-DEMA is currently placed near 19,490, which will act as the first hurdle for the index, followed by 19,650.
- The immediate support for the index is situated close to 19,265, where the 50-DEMA is placed. If the index sustains below that, it could retrace back towards the major breakout point of 19,000-18,900.
- On a daily basis, the momentum indicator RSI is below the center point, indicating weakness.
- For the short term, 19,000 and 18,900 will serve as support levels, whereas 19,490 and 19,650 will serve as resistance levels.

BankNifty, 18-Aug, Daily Chart



- The index began the week on a gap down note and continued its weakness throughout the week. As a result, the index registered a low of 43,600 and settled for the week on a negative note at 43,851.
- Technically, the index has broken the 50-DEMA support and is sustaining below it. Currently, the index is positioned near the 100-DEMA support at 43,850. If the index sustains below it, the index could drift towards 43,400-43,000 levels.
- The trend line support is situated around the 43,000 level, which will serve as a strong support for the index in the short term.
- The 50-DEMA is situated close to 44,550, which will act as first key hurdle for the index, followed by 45,000.
- The momentum indicator RSI on the daily scale is placed below the center point, indicating weakness.
- For the short term, 43,400 and 43,000 will act as support points, whereas 44,550 and 45,000 will act as resistance points.

ACMIIL Retail Research Products

Informational Products	Recommendation Products
Morning Notes	Momentum calls
Market Watch	Smart Delivery trades
Investor First	Positional technical calls
Preview	Investment ideas
Market Pulse	Master trades High & Medium Risk
RBI Monetary Policy	Techno Funda
Budget Report	Stock Basket
Weekly Derivatives Synopsis	Mutual fund model portfolios
Rollover Snapshot	Portfolio Doctor
Rollover Analysis (Monthly)	

For More Information on Retail Research Products please visit

<https://www.investmentz.com/research-services>

Asit C. Mehta

INVESTMENT INTERMEDIATES LTD.

Retail Research Desk:

Email: retailresearch@acm.co.in

Research Analyst Registration Number:

INH000002483

CIN: U65990MH1993PLC075388

Download Investmentz app:



Follow us on:



Information pertaining to Asit C. Mehta Investment Intermediates Limited (ACMIIL):

ACMIIL is a SEBI registered Stock Broker, Merchant Banker, Portfolio Manager, Research Analyst and Depository Participant. It is also a AMFI registered Mutual Fund Distributor. Its associate/group companies are Asit C. Mehta Commodity Services Limited, Nucleus IT Enabled Services, and Asit C. Mehta Financial Services Limited (all providing services other than stock broking, merchant banking and portfolio management services.)

Disclosures

ACMIIL/its associates and its Research analysts have no financial interest in the companies covered on the report. ACMIIL/its associates and Research analysts did not have actual/beneficial ownership of one per cent or more in the companies being covered at the end of month immediately preceding the date of publication of the research report. ACMIIL/its associates or Research analysts have no material conflict of interest, have not received any compensation/benefits for any reason (including investment banking/ merchant banking or brokerage services) from either the companies concerned/third parties with respect to the companies covered in the past 12 months. ACMIIL/its associates and research analysts have neither managed or co-managed any public offering of securities of the companies covered nor engaged in market making activity for the companies being covered. Further, the companies covered neither are/nor were a client during the 12 months preceding the date of the research report. Further, the Research analyst/s covering the companies covered herein have not served as an officer/director or employee of the companies being covered

Disclaimer:

This report is based on information that we consider reliable, but we do not represent that it is accurate or complete and it should not be relied upon such. ACMIIL or any of its affiliates or employees shall not be in any way responsible for any loss or damage that may arise to any person from any inadvertent error in the information contained in the report. To enhance transparency we have incorporated a Disclosure of Interest Statement in this document. This should however not be treated as endorsement of the views expressed in the report.

You are also requested to refer to the disclaimer (which is deemed to be part and parcel and is applicable to this research report as well) : <http://www.investmentz.com/disclaimer>