

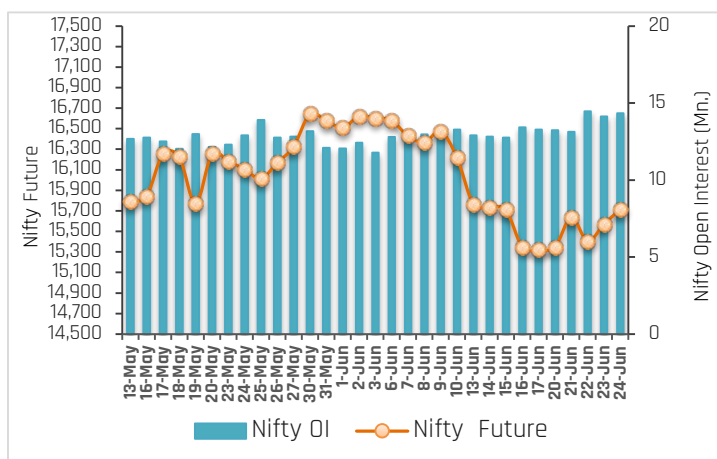
27-June-22

PARTICULARS	Last Closing	Previous Week	% Change
<b>NIFTY SPOT</b>	15,699	15,294	2.65
<b>NIFTY FUTURES</b>	15,712	15,319	2.57
<b>BANKNIFTY SPOT</b>	33,627	32,743	2.70
<b>BANKNIFTY FUTURES</b>	33,654	32,789	2.64
<b>NIFTY PCR</b>	1.04	0.75	38.67
<b>NIFTY PCR-VOL</b>	0.81	0.79	2.53
<b>NIFTY OI(In Mn)</b>	14.34	13.28	7.98
<b>BANKNIFTY OI(In Mn)</b>	2.89	3.13	-7.67
<b>INDIA VIX</b>	20.55	22.76	-9.71
<b>NIFTY BASIS POINTS</b>	13.05	25.75	-49.32

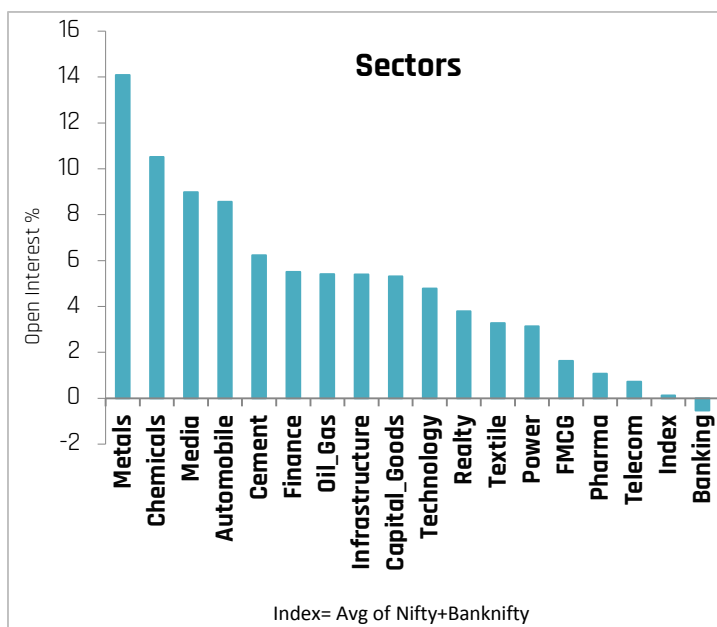
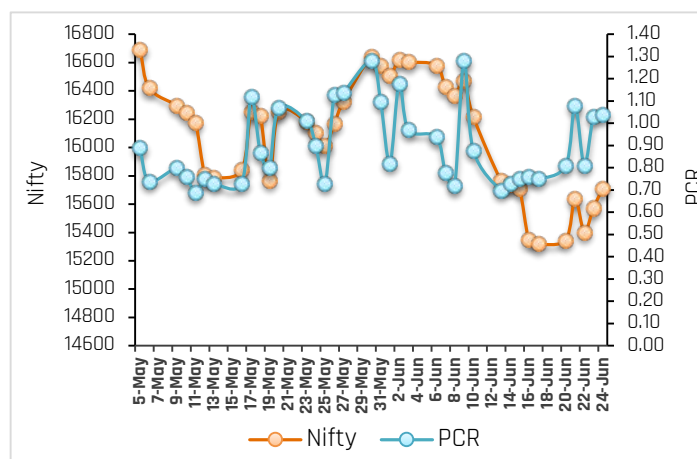
## Index Outlook

Last week, the domestic benchmark index remained volatile and registered a strong recovery from lower levels due to positive global cues and cooling commodity prices. Finally, Nifty Future settled on positive note at 15712 up by 2.57% (WoW) with an addition in open interest of 7.98% (WoW) indicating neutral to positive bias for the short term. During the week, India VIX cooled off by 9.71% and closed at 20.55%, but still on the higher level. We expect volatility will remain high due to the geopolitical issue and F&O expiry. Another derivatives indicator, Nifty Put-Call ratio currently stands on positive side at 1.04, up by 38.67% (WoW). Technically, the index on a weekly scale has found support around 15200, where the 100 weekly simple moving average and previous breakout point were placed. As long as the index holds the support level of 15200, a recovery till 16000-16100 could be possible. For the next week, 15400 and 15200 will act as support points, whereas 16200 and 16400 will act as resistance points. Going forward, globally Covid-19 cases, geopolitical tensions between Russia and Ukraine, Rupee movement against the Dollar, bond yields movement, F&O expiry, progress of monsoon, Fii's flow, global cues, updates on inflation, and crude oil price movement will dictate the trend on the bourses next week.

## Nifty OI Trend



## Nifty FutVsPcr



## Sectoral Activity

- Last week, **Metals, Chemicals, Media, Automobile** and **Cement** sectors saw open interest addition. Top names included **VEDL, HINDCOPPER, CHAMBLFERT, NAVINFLUOR, PVR, SUNTV, APOLLOTYRE, M&M, JKCEMENT** and **RAMCOCEM**.
- In the **Banking** space, **CANBK, PNB** and **SBIN** saw long build up, while short covering seen in **RBLBANK, FEDERALBNK, BANKBARODA, HDFCBANK, ICICIBANK** and **KOTAKBANK**.
- This week, some buying can be seen in **HAVELLS, TRENT, MPHASIS, SIEMENS, COROMANDEL** and **ICICIBANK** while selling pressure can be seen in **IDFCFIRSTB, NMDC, NTPC,** and **HAL**.
- From sector space, **Chemicals, Power, Metals, Cement, Banking, Automobile, FMCG** and **Technology** stocks are likely to remain in focus in the forthcoming week.

27-June-22

## Stocks to Watch Out (Weekly)

Long Build-up			
Symbol	Price	OI Change	Price Change
RECLTD	118.20	34%	5%
APOLLOTYRE	181.95	30%	4%
M&M	1,067.40	24%	7%
SRTRANSFIN	1,248.75	21%	10%

Long Unwinding			
Symbol	Price	OI Change	Price Change
BANDHANBNK	286.85	-9%	-8%
NBCC	28.55	-8%	-2%
TATAPOWER	208.30	-5%	-1%
HAL	1,796.15	-3%	-2%

Short Build-up			
Symbol	Price	OI Change	Price Change
VEDL	221.65	41%	-16%
CHAMBLFERT	286.00	31%	-5%
HINDCOPPER	85.55	28%	-8%
GAIL	132.85	24%	-4%

Short covering			
Symbol	Price	OI Change	Price Change
UBL	1,499.80	-14%	4%
SBICARD	759.50	-14%	10%
RBLBANK	88.10	-11%	7%
IBULHSGFIN	101.35	-11%	5%

## Weekly Recommendation

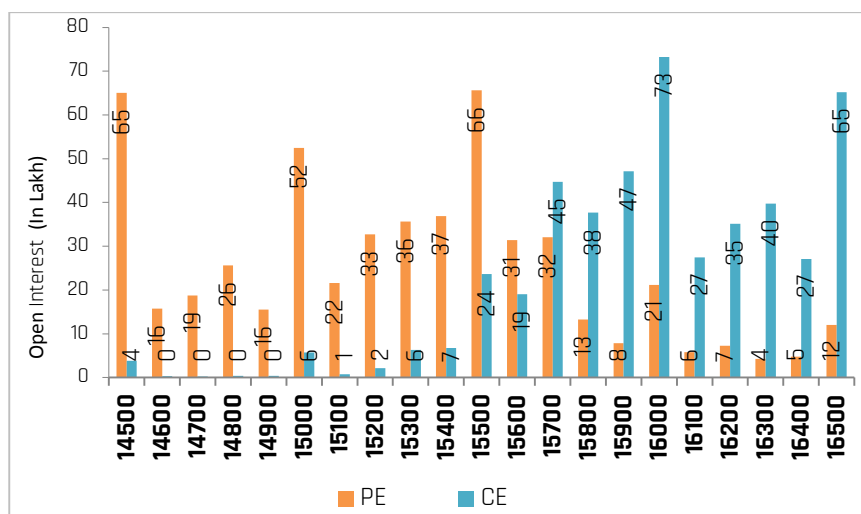
**HAVELLS (1110.05)** - The stock has seen open interest addition of 23.40% along with positive price action indicating long buildup. The stock can be bought in the range of 1105-1110 with a stop loss of 1080 on closing basis for a target of 1140-1160.

**Target: 1160 Stop Loss: 1080**

**NTPC (137.00)** - The stock has seen open interest addition of 15.16% along with negative price action indicating short build-up. The stock can be sold in the range of 138-139 with a stop loss of 142 on closing basis for a target of 135-132.

**Target: 132 Stop Loss: 142**

## Nifty Options Snapshot



From the OI Concentration (30-Jun Series), Maximum addition of open interest on the call options front exists at the strike prices of 15900 16000 and 16500 (with nearly 47.10 lacs, 73.21 lacs, and 65.20 lacs shares outstanding respectively). This indicates that 16000 and 16500 levels would act as the resistance zone on the upside. On the Put options front, maximum addition of open interest is at the strike prices of 15500, 15000 and 14500 (with nearly 65.61 lacs, 52.50 lacs and 65.08 lacs shares outstanding respectively), indicating that 15000 and 14500 levels would act as the stronger support zone on the downside.

# Weekly Derivatives Synopsis

27-June-22

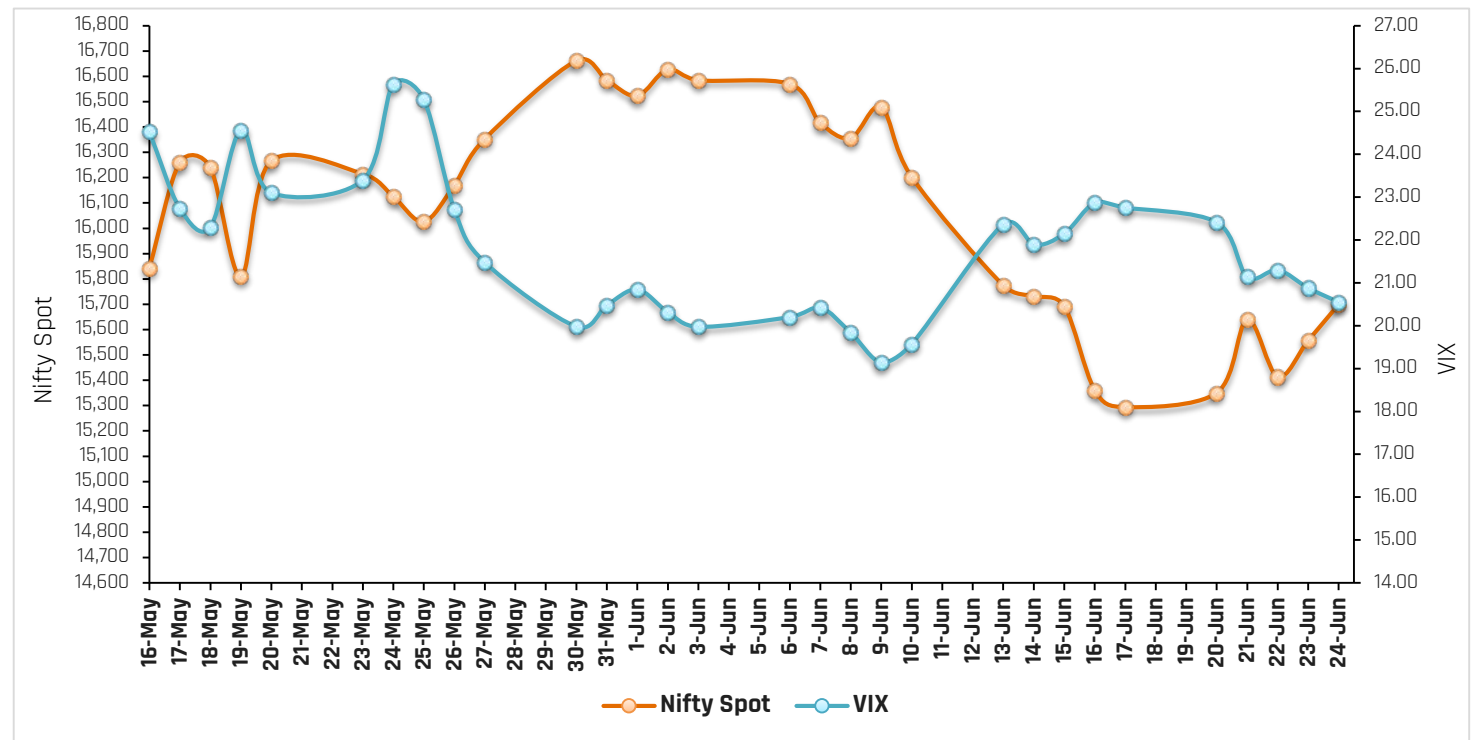
## FII Stats (5 Days Trend)

(Rs. Cr.)	24-Jun	23-Jun	22-Jun	21-Jun	20-Jun
INDEX FUTURES	667.59	853.06	-761.32	2147.75	-18
INDEX OPTIONS	-1018.12	15621.30	4847.85	1648.48	-5582
STOCK FUTURES	1408.80	1701.16	830.34	2332.79	1170
STOCK OPTIONS	-44.96	84.53	196.15	-165.06	-121

## FII Open Interest Activity (Long& Short Ratio)

Date	Index Fut: Long/Short	Index Option: Long /Short	Index put: long /Short	Stock Fut Long/Short
17-Jun	0.16	1.29	1.88	1.35
20-Jun	0.17	1.20	1.67	1.38
21-Jun	0.28	1.28	1.67	1.43
22-Jun	0.26	1.32	1.69	1.44
23-Jun	0.31	1.47	2.05	1.47
24-Jun	0.33	1.43	1.96	1.51

## NIFTY VS INDIA VIX (Last 30 Days Trend)



**Observation:** Any rise in India Vix this week would lead to either side movement in the Index. As per the above chart, India Vix has strong support at around 18.00 and resistance stands at 25.00.

## Weekly Advance Decline Ratio (Nifty Stocks)

Advances	36
Declines	10
Unchanged	04

### Technical View

#### Nifty 24-Jun, Weekly Chart



- Technically, the index on a weekly scale has found support around 15200, where the 100 weekly simple moving average and previous breakout point were placed. As long as the index holds the support level of 15200, a recovery till 16000-16100 could be possible.
- On the higher side, the index has left a bearish gap in the range of 15886-16172. Thus, 16172 will act as a strong hurdle for the index. If the index manages to close above 16172, then the next major resistance is placed close to 16677, where 34 weekly exponential moving average is placed.
- The RSI on the weekly scale is placed below the center point, but it is placed close to trendline support. Thus, a short term pullback could be possible, but the trend remains down.
- For the next week, 15400 and 15200 will act as support points, whereas 16200 and 16400 will act as resistance points.

#### BankNifty, 24-Jun, Weekly Chart



- The index started the week on a positive note and continued bullish momentum throughout the week. On the back of that, the index closed the week on a positive note at 33627.
- Technically, the index has found support close to 100 weekly simple moving average, as highlighted in the chart. The 100-weekly exponential moving average is currently placed near 33243.
- On the higher side, the bearish gap is placed in the range of 34347-33774, which will act as the first resistance for the index, followed by 35610, where the 34 weekly exponential moving average is placed.
- The RSI on the weekly scale is placed below the center point, but it is placed close to trendline support. Thus, a short term retracement is probable, but the trend remains down.
- In the short term, 33200 and 32200 will act as support points, whereas 34350 and 35610 will act as resistance points.

### ACMIIL Retail Research Products

Informational Products	Recommendation Products
Morning Notes	Momentum calls
Market Watch	Smart Delivery trades
Investor First	Positional technical calls
Preview	Investment ideas
Market Pulse	Master trades High & Medium Risk
RBI Monetary Policy	Techno Funda
Budget Report	Stock Basket
Weekly Derivatives Synopsis	Mutual fund model portfolios
Rollover Snapshot	Portfolio Doctor
Rollover Analysis (Monthly)	

For More Information on Retail Research Products please visit

<https://www.investmentz.com/research-services>

## Asit C. Mehta

INVESTMENT INTERMEDIATES LTD.

### Retail Research Desk:

Email: [retailresearch@acm.co.in](mailto:retailresearch@acm.co.in)

Research Analyst Registration Number:

INH000002483

CIN: U65990MH1993PLC075388

Download Investmentz app:



Follow us on:



Information pertaining to Asit C. Mehta Investment Intermmediates Limited (ACMIIL):

ACMIIL is a SEBI registered Stock Broker, Merchant Banker, Portfolio Manager and Depository Participant. It is also a AMFI registered Mutual Fund Distributor. It does not have any disciplinary history. Its associate/group companies are Asit C. Mehta Commodity Services Limited, Asit C. Mehta Realty Services Pvt. Ltd, Asit C. Mehta Forex Pvt. Ltd, Nucleus IT Enabled Services ,Asit C. Mehta Financial Services Limited (all providing services other than stock broking,merchant banking and portfolio management services.).

#### Disclosures

ACMIIL/its associates and its Research analysts have no financial interest in the companies covered on the report. ACMIIL/its associates and Research analysts did not have actual/beneficial ownership of one per cent or more in the companies being covered at the end of month immediately preceding the date of publication of the research report. ACMIIL/its associates or Research analysts have no material conflict of interest, have not received any compensation/benefits for any reason (including investment banking/ merchant banking or brokerage services) from either the companies concerned/third parties with respect to the companies covered in the past 12 months. ACMIIL/its associates and research analysts have neither managed or co-managed any public offering of securities of the companies covered nor engaged in market making activity for the companies being covered. Further, the companies covered neither are/nor were a client during the 12 months preceding the date of the research report. Further, the Research analyst/s covering the companies covered herein have not served as an officer/director or employee of the companies being covered

#### Disclaimer:

This report is based on information that we consider reliable, but we do not represent that it is accurate or complete and it should not be relied upon such. ACMIIL or any of its affiliates or employees shall not be in any way responsible for any loss or damage that may arise to any person from any inadvertent error in the information contained in the report. To enhance transparency we have incorporated a Disclosure of Interest Statement in this document. This should however not be treated as endorsement of the views expressed in the report.

You are also requested to refer to the disclaimer (which is deemed to be part and parcel and is applicable to this research report as well) : <http://www.investmentz.com/disclaimer>