

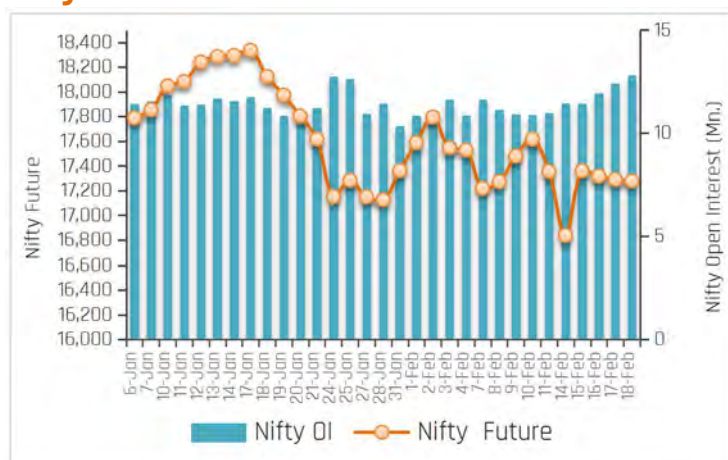
21-Feb-22

PARTICULARS	Last Closing	Previous Week	% Change
NIFTY SPOT	17276	17375	-0.57
NIFTY FUTURES	17278	17356	-0.45
BANKNIFTY SPOT	37599	38517	-2.38
BANKNIFTY FUTURES	37591	38518	-2.40
NIFTY PCR	1.10	1.09	0.92
NIFTY PCR-VOL	0.98	0.99	-1.01
NIFTY OI(In Mn)	12.76	10.92	16.85
BANKNIFTY OI(In Mn)	2.18	2.13	2.35
INDIA VIX	22.17	18.68	18.68
NIFTY BASIS POINTS	1.75	-18.95	109.23

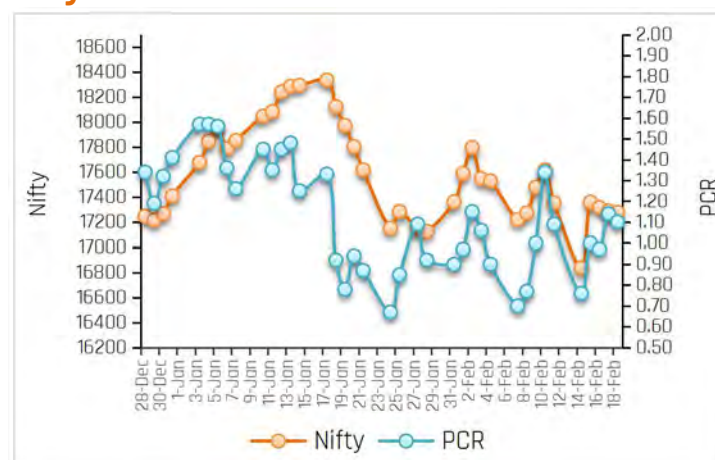
## Index Outlook

Last week, the domestic equity benchmark indices remained volatile and settled on negative note amid escalating tensions between Russia and Ukraine, rising crude oil prices, and higher inflation put pressure on the market. Finally, Nifty Future closed at 17278 down by 0.45% (WoW) with an addition in open interest of 16.85% (WoW) indicating uncertainty for short term. During the week, India VIX shoots up by 18.68% and closed at 22.17%, indicating volatility will remain high. Another derivatives indicator, Nifty Put-Call ratio currently stands at 1.10, up by 0.92% (WoW). Technically, the index has found the support of 200 DSMA and a short-term trend line. On the back of that, the index has witnessed a relief rally and registered a high of 17491. However, the index has failed to cross resistance of 100 DSMA (17617) and settled the week at 17276. For the short term, 17000 and 16800 will act as support points for the index, whereas 17500 and 17620 will act as resistance points. Thus, as long as as the index holds above 16800, the upmove will continue in the index for 17600-18000. On the flip side, if the index closes below 16800, then weakness till 16000-15800 could be possible. Going forward, new Covid variant cases, F&O expiry, geopolitical tensions between Russia and Ukraine, Rupee movement against the Dollar, bond yields movement, assembly polls, Fii's flow, global cues, and crude oil price movement will dictate the trend on the bourses next week.

## Nifty OI Trend



## Nifty FutVsPcr



## Sectoral Activity

- Last week, **Cement, Pharma, Finance, Automobile,** and **Oil&Gas** sectors saw open interest addition. Top names included **AMBUJACEM, JKCEMENT, METROPOLIS, CIPLA, MANAPPURAM, RECLTD, BALKRISIND, MOTHERSUMI, GUJGASLTD** and **PETRONET.**
- Metals** and **Power** sectors saw open interest unwinding on the back of profit booking in stocks.
- In the **Banking** space, **ICICIBANK, IDFCFIRSTB, RBLBANK, AUBANK, CANBK** and **CUB** saw short build up, while long unwinding seen in **BANKBARODA, SBIN, AXISBANK,** and **FEDERALBNK.**
- This week, some buying can be seen in **MPHASIS, HDFC, TATACONSUM, CUMMINSIND** and **SIEMENS** while selling pressure can be seen in **LALPATHLAB, CUB,** and **IDFCFIRSTB.**
- From sector space, **Power, Metals, Technology Auto, Banking, Pharma, and Cement** stocks are likely to remain in focus in the forthcoming week.

21-Feb-22

## Stocks to Watch Out (Weekly)

Long Build-up			
Symbol	Price	OI Change	Price Change
GUJGASLTD	660.35	44%	4%
PAGEIND	41,614.95	14%	5%
EICHERMOT	2,700.00	7%	4%
VOLTAS	1,249.20	7%	5%

Long Unwinding			
Symbol	Price	OI Change	Price Change
TATAPOWER	225.55	-13%	-3%
NTPC	132.75	-13%	-3%
FEDERALBNK	97.75	-10%	-5%
JINDALSTEL	412.65	-10%	-6%

Short Build-up			
Symbol	Price	OI Change	Price Change
METROPOLIS	1,997.40	107%	-14%
CIPLA	908.75	60%	-5%
MANAPPURAM	120.85	57%	-21%
AMBUJACEM	338.55	45%	-8%

Short covering			
Symbol	Price	OI Change	Price Change
BATAINDIA	1,918.05	-13%	3%
DIVISLAB	4,352.00	-13%	1%
COROMANDEL	803.80	-12%	3%
CUMMINSIND	966.35	-5%	3%

## Weekly Recommendation

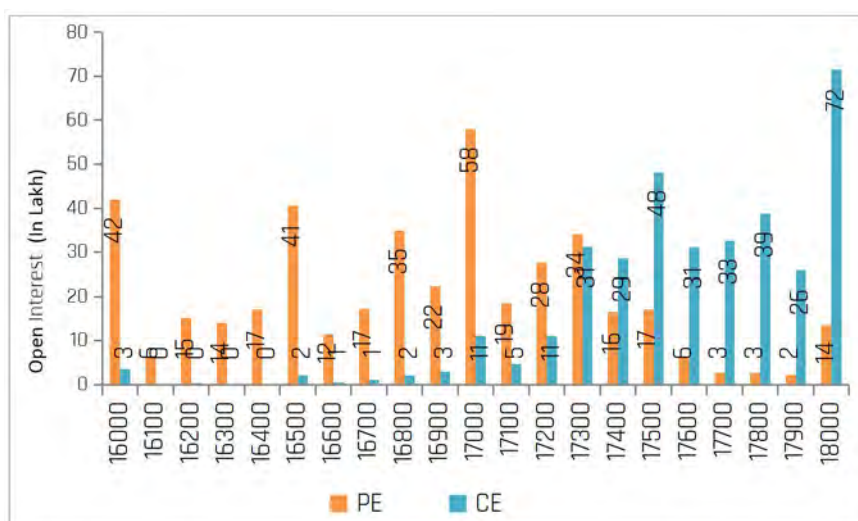
**MPHASIS (3018.45)** - The stock has seen open interest addition of 4.84% along with positive price action indicating long build-up. The stock can be bought in the range of 2980-2990 with a stop loss of 2910 on closing basis for a target of 3100-3150.

**Target: 3150 Stop Loss: 2910**

**CUB (128.85)** - The stock has seen open interest addition of 4.38% along with negative price action indicating short build-up. The stock can be sold in the range of 130-131 with a stop loss of 136 on closing basis for a target of 126-120.

**Target: 120 Stop Loss: 136**

## Nifty Options Snapshot



From the OI Concentration (24-Feb Series), Maximum addition of open interest on the call options front exists at the strike prices of 17500 and 18000 (with nearly 48.09 lacs, and 71.54 lacs shares outstanding respectively). This indicates that 17500 and 18000 levels would act as the resistance zone on the upside. On the Put options front, maximum addition of open interest is at the strike prices of 17000, and 16500 (with nearly 57.98 lacs, and 40.56 lacs shares outstanding respectively), indicating that 17000 and 16500 levels would act as the stronger support zone on the downside.

# Weekly Derivatives Synopsis

21-Feb-22

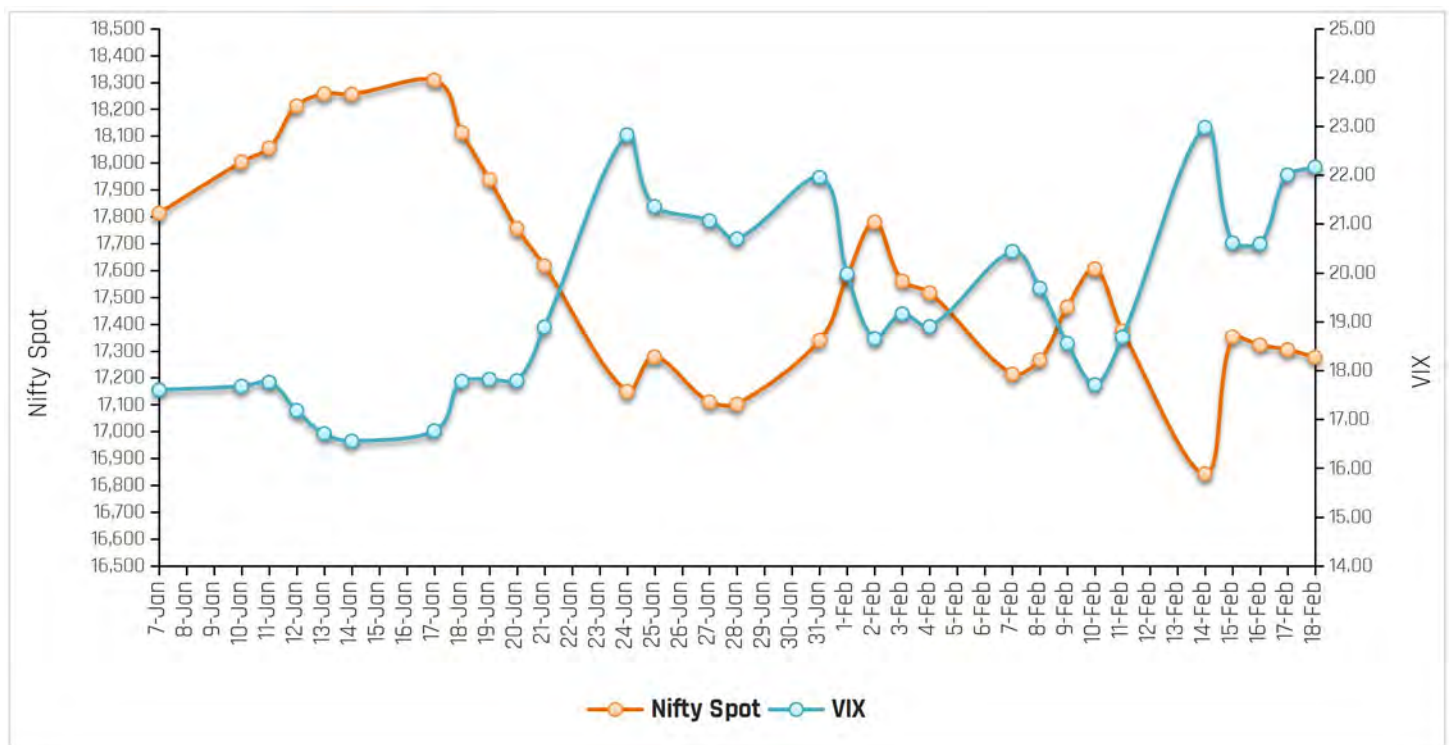
## FII Stats (5 Days Trend)

(Rs. Cr.)	18-Feb	17-Feb	16-Feb	15-Feb	14-Feb
<b>INDEX FUTURES</b>	729.16	890.39	554.84	1748.89	-252.77
<b>INDEX OPTIONS</b>	-5069.24	7017.01	-810.37	8198.93	254.86
<b>STOCK FUTURES</b>	483.02	899.71	492.83	2280.79	556.51
<b>STOCK OPTIONS</b>	27.68	-149.72	-220.29	217.17	-538.31

## FII Open Interest Activity (Long& Short Ratio)

Date	Index Fut: Long/Short	Index Option: Long /Short	Index put: long /Short	Stock Fut Long/Short
<b>11-Feb</b>	0.93	1.27	1.93	1.10
<b>14-Feb</b>	0.90	1.22	1.88	1.12
<b>15-Feb</b>	1.16	1.45	1.81	1.17
<b>16-Feb</b>	1.23	1.44	1.76	1.18
<b>17-Feb</b>	1.36	1.61	2.12	1.19
<b>18-Feb</b>	1.47	1.39	1.68	1.20

## NIFTY VS INDIA VIX (Last 30 Days Trend)



**Observation:** Any rise in India Vix this week would lead to either side movement in the Index. As per the above chart, India Vix has strong support at around 16.50 and resistance stands at 24.00.

## Weekly Advance Decline Ratio (Nifty Stocks)

Advances	17
Declines	20
Unchanged	13

## Asit C. Mehta

INVESTMENT INTERMEDIATES LTD.

### Retail Research Desk:

Email: [retailresearch@acm.co.in](mailto:retailresearch@acm.co.in)

Research Analyst Registration Number:

INH00002483

CIN: U65990MH1993PLC075388

Download Investmentz app:



Follow us on:



Information pertaining to Asit C. Mehta Investment Intermediates Limited (ACMIL):

ACMIL is a SEBI registered Stock Broker, Merchant Banker, Portfolio Manager and Depository Participant. It is also a AMFI registered Mutual Fund Distributor. It does not have any disciplinary history. Its associate/group companies are Asit C. Mehta Commodity Services Limited, Asit C. Mehta Realty Services Pvt. Ltd, Asit C. Mehta Forex Pvt. Ltd, Nucleus IT Enabled Services ,Asit C. Mehta Financial Services Limited (all providing services other than stock broking,merchant banking and portfolio management services.).

#### Disclosures

ACMIL/its associates and its Research analysts have no financial interest in the companies covered on the report. ACMIL/its associates and Research analysts did not have actual/beneficial ownership of one per cent or more in the companies being covered at the end of month immediately preceding the date of publication of the research report. ACMIL/its associates or Research analysts have no material conflict of interest, have not received any compensation/benefits for any reason (including investment banking/ merchant banking or brokerage services) from either the companies concerned/third parties with respect to the companies covered in the past 12 months. ACMIL/its associates and research analysts haveneither managed or co-managed any public offering of securities of the companies covered nor engaged in market making activity for the companies being covered. Further, the companies covered neither are/nor were a client during the 12 months preceding the date of the research report. Further, the Research analyst/s coveringthe companies covered herein have not served as an officer/director or employee of the companies being covered

#### Disclaimer:

This report is based on information that we consider reliable, but we do not represent that it is accurate or complete and it should not be relied upon such. ACMIL or any of its affiliates or employees shall not be in any way responsible for any loss or damage that may arise to any person from any inadvertent error in the information contained in the report. To enhance transparency we have incorporated a Disclosure of Interest Statement in this document. This should however not be treated as endorsement of the views expressed in the report.