

## CORPORATE AND ECONOMY NEWS

- **Vodafone Idea, Indus Tower:** The Vodafone Group will likely divest about 9.94% of its stake in telecom tower operator Indus Towers Ltd. in a share sale on Wednesday—over one or more tranches on the exchanges. The carrier may sell 26.8 crore shares worth Rs 9,138.8 crore, according to the term sheet accessed by NDTV Profit, at Rs 310–341 per share.
- **Zee Entertainment Enterprises:** CFO Rohit Kumar Gupta steps down from the position for personal reasons. The company appointed Mukund Galgali as acting CFO.
- **Gland Pharma:** Fosun to sell a 5% stake in the company through a block deal. Fosun Pharma offers 8.2 million shares in the company, at a floor price set at Rs 1,750 per share.
- **Craftsman Automation:** The automation firm's board approved the QIP with a floor price of Rs 4,426.11 per share, a discount of around 7 percent from the previous closing price.
- **Tata Technologies:** The company collaborated with Microsoft and Tata Motors for the InnoVent hackathon for engineering students.
- **NMDC:** The company opened a new R&D centre in Hyderabad at an investment of Rs 50 crore.
- **Wipro:** The company clarified that the report of the multi-million-dollar deal from Standard Chartered is based on rumour and is inaccurate.
- **Electronics Mart India:** The company commenced the commercial operations of a new multi-brand store under the brand name 'BAJAJ ELECTRONICS' on June 18 in Andhra Pradesh.
- **Bharat Forge:** The company makes an additional investment of \$40 million in Bharat Forge America.
- **Paytm:** Goldman Sachs sold 44.20 lakh shares of One 97 Communications on Tuesday via block deal for Rs 183.44 crore.
- **ZF Commercial Vehicle Control Systems India:** Wabco Asia may sell 5 per cent equity of ZF Commercial Vehicle Control Systems India in a block deal, according to reports.
- **Tata Technologies:** It has partnered with Microsoft and Tata Motors to host the InnoVent hackathon, focusing on Generative AI innovation for engineering students.
- **Sansera Engineering:** Client Ebene and CVCIGP II Employee Ebene are reportedly planning to sell up to 62.53 lakh shares (11.66 per cent of equity) of the company.
- **Infosys:** Company has launched Infosys AsterTM, an AI-amplified marketing suite that enhances brand experiences, marketing efficiency, and business growth.
- **Seamec:** Company owns and operates 4 multi-support vessels for diving services and subsea operations and has expanded into main fleet shipping with 3 acquired bulk carriers.
- **HUL:** Asian Palm Oil Alliance, expresses concerns over HUL's reported intention to cut palm oil content in soaps by 25%.

Source: Bloombergquint, Economic Times, Business Standard, Business Line, Times of India, Mint, Indian Express, Business Today, Indian Express, Money Control, in.investing, Cnbctv18.

## MARKET SCAN

### INDIAN INDICES

Index	Clsg	Chg
BSE Sensex	77301	0.40%
Nifty	23558	0.39%
Nifty Bank	50441	0.88%
India VIX	12.97	1.11%

### GLOBAL INDICES

DJIA	38835	0.15%
Nasdaq	17862	0.03%
FTSE	8191	0.60%
CAC	7629	0.76%
DAX	18132	0.35%
Nikkei	38698	0.56%
Hang Seng	18200	1.59%

### SECTOR INDEX (NSE)

IT	34803	0.59%
Infra	9053	0.27%
Energy	41307	0.65%
FMCG	57167	-0.10%
Pharma	19827	-0.35%
Auto	25715	-0.03%
Metals	9890	-0.22%
Midcap	55490	0.48%
Nifty 500	22330	0.52%

### DII/FII INVESTMENT (IN.CR.)

DII	1,556
FII/FPI	2,569

### Top Open Interest Gainers

Symbol	OI Chg	% Chg
ALKEM	26.94%	2.46%
CANFINHOME	21.13%	6.76%
GRASIM	19.58%	-0.52%
M&MFIN	19.29%	3.57%

### Top Open Interest Losers

GMRINFRA	-8.99%	4.21%
MGL	-7.80%	0.42%
POWERGRID	-6.49%	3.19%
BPCL	-4.84%	0.53%

### FOREX MARKET

USDINR	83.39	0.04%
EURINR	89.57	0.05%

### COMMODITY MARKET

Gold (\$/OZ)	2345.00	-0.08%
Silver(\$/OZ)	29.54	-0.07%
Brent (\$/Bbl)	85.34	0.01%
Copper(\$/Lbs)	4.52	0.54%

Source: in.investing.com; As on 8:10 am IST

GLOBAL MARKETS

**Global Market Update**

The S&P 500 and Nasdaq closed at record highs on Tuesday, buoyed by Nvidia's continued surge to new peaks, while the Dow ended barely higher in subdued pre-holiday trading following softer-than-expected U.S. retail sales data. The Dow Jones Industrial Average rose 56.76 points, or 0.15%, to 38,834.86. The S&P 500 climbed 13.80 points, or 0.25%, to 5,487.03 and the Nasdaq Composite gained 5.21 points, or 0.03%, at 17,862.23.

**Crude Oil**

Oil rose slightly in early trade on Wednesday as concern over escalating conflict in Europe and the Middle East offset demand worries following an unexpected build in U.S. crude inventories.

**Gift Nifty**

The GIFT Nifty is trading 67 points higher on June 19, compared to the Nifty 50 close, indicating a positive opening for the day. Nifty futures were trading at 23,657.50 at 07:00 am IST.

TECHNICAL CHART



TECHNICAL VIEW

**Nifty Outlook:**

Domestic benchmark equity indices Nifty50 and Sensex began trading at new highs on Tuesday, aided mostly by favourable global cues. Finally, Nifty settled the day on record high at 23,558 levels. Technically, the index broke out of a consolidation area of 23,000-23,500, leading to fresh momentum. In the immediate term, the gain may extend to levels around 23,700 and 23,800. On the downside, the Nifty finds immediate support near 23,400 followed by last week low of 23,200.

**Bank Nifty Outlook:**

The Bank Nifty index opened on a positive note and maintained strength throughout, settling the day on a bullish note at 50,441 levels. Technically, on a daily basis, the Banknifty has broken the short-term consolidation 49,530-50,250 and has remained above it, indicating strength. According to this breakout, the index may test the levels of 50,800-51,000. On the downside, immediate support is near to 50,000 mark.

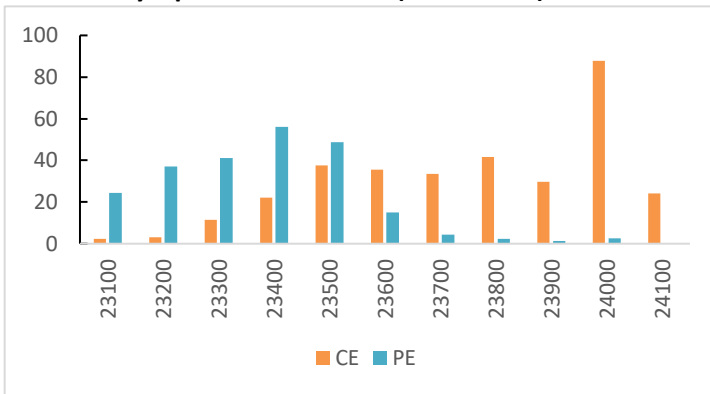
19-Jun-24

DERIVATIVES INDICATORS

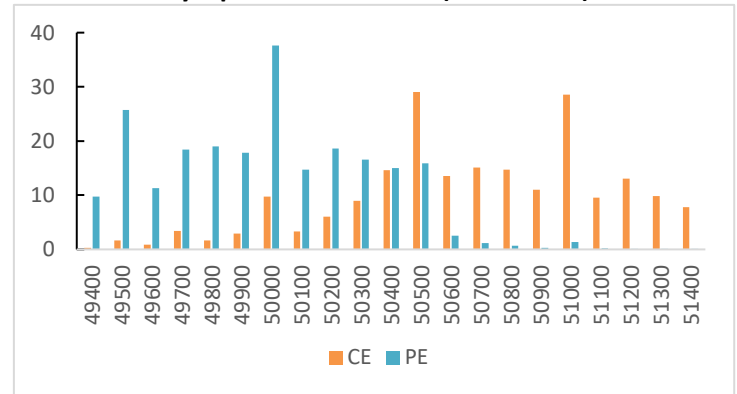
	Last Closing	Previous Day	Changes %	Out Come
NIFTY JUNE FUT	23568.10	23466.65	0.43%	Long Buildup
NIFTY OI (Total)	15208050	14888300	2.15%	
BANKNIFTY JUNE FUT	50417.35	50042.40	0.75%	Long Buildup
BANKNIFTY OI (Total)	2867880	2732955	4.94%	
FINNIFTY JUNE FUT	22580.40	22431.95	0.66%	Long Buildup
FINNIFTY OI (Total)	78510	56490	38.98%	
MIDCPNIFTY JUNE FUT	12113.45	12044.95	0.57%	Long Buildup
MIDCPNIFTY OI (Total)	1836675	1791125	2.54%	
NIFTY PCR - OI	1.26	1.3	-3.08%	Neutral
INDIA VIX	12.97	12.82	1.11%	Neutral

WEEKLY OPTION'S OPEN INTEREST

Nifty Option OI - 20 June (OI in Lakhs)



BankNifty Option OI - 19 June (OI in Lakhs)



FII DERIVATIVES STATISTICS (In Cr.)

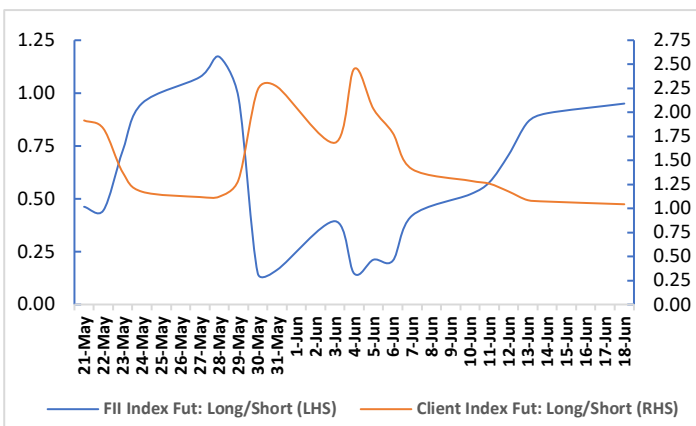
INDEX FUTURES	779.02
INDEX OPTIONS	-6891.75
STOCK FUTURES	-710.20
STOCK OPTIONS	-435.97

Securities in Ban For Trade Date 19-JUN-2024:

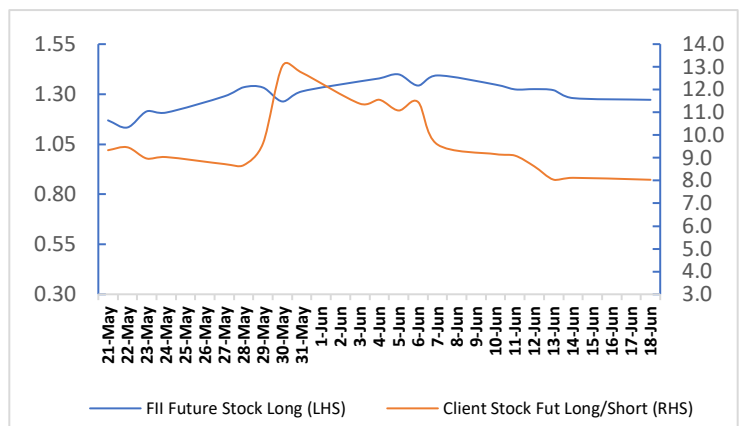
BALRAMCHIN GNFC HINDCOPPER INDIACEM PEL SAIL SUNTV

Participant wise Open Interest (no. of contracts)

Fiis Vs Client Index Fut Long Short Ratio



Fiis Vs Client Stock Fut Long Short Ratio



## Retail Research Technical &amp; Fundamental Calls for the Month of June-2024

## Positional Calls (For 1-3 Months)

Date	Company	Rec	Rec Price	Stop Loss	Target	Status	Net Returns%
05-Mar	TRIDENT	Accu	38.94	34.64	47.64-51.64	Open	
22-Mar	TCS	Accu	3752-3852	3612	4072-4172	Booked	0.70%
07-May	ITC	Accu	424.5-434.5	408.5	468-495	Open	
24-May	INDUSTOWER	Accu	312.5-352	290	450-500	Open	
04-Jun	RELIANCE	Accu	2815-2915	2740	3100-3200	Open	
06-Jun	TATACONSUM	Accu	1080-1120	1045	1220-1280	Open	
06-Jun	KPITTECH	Accu	1390-1470	1340	1600-1750	Open	
07-Jun	TATAMOTORS	Accu	915-955	890	1020-1100	Open	
11-Jun	AARTIIND	Accu	640-660	615	705-750	Open	
11-Jun	CASTROLIND	Accu	196-201	189	214-230	Open	
13-Jun	CAPLIPOINT	Accu	1355-1395	1290	1530-1630	Open	
14-Jun	WIPRO	Accu	458-478	438	520-570	Open	
18-Jun	UNITDSPR	Accu	1195-1240	1150	1340-1430	Open	

## Investment Idea (For Long Term)

Date	Company	Rec	Rec Price	Target	Status	Net Returns%
24-Nov	ADORWELD	Accu	1500-1520	1806	Open	
01-Apr	AIAENG	Accu	3650-3690	4909	Open	
03-Jan	TCI	Accu	825-835	1080	Open	
24-Jan	APLAPOLLO	Accu	1495-1505	2077	Open	
29-Jan	AUTOAXLES	Accu	2120-2130	2906	Open	
23-Feb	ASTRAL	Accu	2080-2100	2627	Open	
25-Apr	CAPLIPOINT	Accu	1320-1330	1675	Open	
14-May	CIEINDIA	Accu	480-490	617	Open	
05-Jun	ITDCM	Accu	380-390	505	Open	

For More Information on Retail Research Products please visit <https://www.investmentz.com/research-services>

## Asit C. Mehta

INVESTMENT INTERMEDIATES LTD.

Information pertaining to Asit C. Mehta Investment Intermmediates Limited (ACMIIL):

ACMIIL is a SEBI registered Stock Broker, Merchant Banker, Portfolio Manager, Research Analyst and Depository Participant. It is also a AMFI registered Mutual Fund Distributor. Its associate/group companies are Asit C. Mehta Commodity Services Limited, Nucleus IT Enabled Services, and Asit C. Mehta Financial Services Limited (all providing services other than stock broking, merchant banking and portfolio management services.).

Disclosures

ACMIIL/its associates and its Research analysts have no financial interest in the companies covered on the report. ACMIIL/its associates and Research analysts did not have actual/beneficial ownership of one per cent or more in the companies being covered at the end of month immediately preceding the date of publication of the research report. ACMIIL/its associates or Research analysts have no material conflict of interest, have not received any compensation/benefits for any reason (including investment banking/ merchant banking or brokerage services) from either the companies concerned/third parties with respect to the companies covered in the past 12 months. ACMIIL/its associates and research analysts have neither managed or co-managed any public offering of securities of the companies covered nor engaged in market making activity for the companies being covered. Further, the companies covered neither are/nor were a client during the 12 months preceding the date of the research report. Further, the Research analyst/s covering the companies covered herein have not served as an officer/director or employee of the companies being covered

Disclaimer:

This report is based on information that we consider reliable, but we do not represent that it is accurate or complete and it should not be relied upon such. ACMIIL or any of its affiliates or employees shall not be in any way responsible for any loss or damage that may arise to any person from any inadvertent error in the information contained in the report. To enhance transparency we have incorporated a Disclosure of Interest Statement in this document. This should however not be treated as endorsement of the views expressed in the report.

You are also requested to refer to the disclaimer (which is deemed to be part and parcel and is applicable to this research report as well) :<http://www.investmentz.com/disclaimer>

## Retail Research Desk:

Devang Shah E: [devang.shah@acm.co.in](mailto:devang.shah@acm.co.in)  
 Neeraj Sharma E: [neeraj.sharma@acm.co.in](mailto:neeraj.sharma@acm.co.in)  
 Hrishikesh Yedve E: [hrishikesh.yedve@acm.co.in](mailto:hrishikesh.yedve@acm.co.in)  
 Ruchi Jain E: [ruchi.jain@acm.co.in](mailto:ruchi.jain@acm.co.in)  
 Kamlesh Jain E: [kamlesh.jain@acm.co.in](mailto:kamlesh.jain@acm.co.in)  
 Email: [retailresearch@acm.co.in](mailto:retailresearch@acm.co.in)

## Research Analyst Registration Number:

INH000002483

CIN: U65990MH1993PLC075388

## Download Investmentz app:



## Follow us on:

