

CORPORATE AND ECONOMY NEWS

- **Bharti Airtel:** The company prepaid Rs 7,904 crore to clear deferred liabilities for spectrum acquired in 2012 and 2015. The company fully prepaid all deferred liabilities related to spectrum acquired in 2012 and 2015.
- **Adani Enterprises:** Promoters increased their stake in the company to 73.95% from 71.93% after acquiring 2.02% equity between September 2023 and June 2024.
- **SBI:** The company will raise MCLR by 10 bps across tenures effective June 15.
- **Jubilant Pharmova:** The company's US-based arm to voluntarily prepay a term loan worth Rs 626 crore and the company's arm to invest \$50 million to expand its radiopharmacy network in the US.
- **RVNL:** The company emerged as the lowest bidder for a project worth Rs 160 crore from East Coast Railway.
- **Life Insurance Corp:** LIC has clarified that no formal proposal has been initiated to enter the health insurance market.
- **Adani Power:** The company incorporated a wholly owned subsidiary in Singapore.
- **InterGlobe Aviation:** The company amended its existing pact with Pratt & Whitney affiliate International Aero Engines, IAE, to give compensation to the company for the unavailability of engines.
- **Rites:** The company signed a MoU with Damodar Valley Corp. for innovation in rail infrastructure.
- **Supriya Lifescience:** CEO and KMP Rajeev Kumar Jain will be retiring from the services effective June 14 on attaining the age of superannuation.
- **Elgi Rubber:** The company's Brazilian unit has executed an agreement for the sale of land to Sergio Augusto Pimentel Zeraik, Brazil for Rs 4.5 crore.
- **Pidilite Industries:** The company's Industria Chimica, Italy Joint Venture ICA Pidilite entered into an agreement with ICA for licensing of certain UV technology from ICA.
- **Vashu Bhagnani Industries:** The company signed a deal with Pooja Leisure and Lifestyle for the transformation of commercial buildings in Juhu.
- **INOX Wind:** The company incorporated four wholly-owned subsidiaries.
- **Som Distilleries and Breweries:** The company terminated the contract with vendor services of its associated company over allegations of child labour. Police has launched an investigation after the Government's child protection agency found out children working at its liquor factory in Madhya Pradesh.
- **One97 Communication:** Paytm is in talks with Zomato Ltd. to sell its movie and ticketing business. The fintech firm is going to focus on its core business: payment and financial services along with goods commerce.
- **Blue Dart:** The company appointed Dipanjan Banerjee as Chief Commercial Officer.
- **Adani Ports & SEZ:** APSEZ has received approval to more than double the capacity of Mundra port at an investment of ₹45,000 crore, reports said.

MARKET SCAN

INDIAN INDICES

Index	Clsg	Chg
BSE Sensex	76993	0.24%
Nifty	23466	0.29%
Nifty Bank	50002	0.31%
India VIX	12.82	-4.93%

GLOBAL INDICES

DJIA	38778	0.49%
Nasdaq	17857	0.95%
FTSE	8142	-0.06%
CAC	7572	0.91%
DAX	18068	0.37%
Nikkei	38501	1.04%
Hang Seng	17988	0.29%

SECTOR INDEX (NSE)

IT	34599	-0.87%
Infra	9029	0.56%
Energy	41040	0.24%
FMCG	57226	0.19%
Pharma	19896	0.29%
Auto	25722	1.30%
Metals	9912	0.73%
Midcap	55226	1.05%
Nifty 500	22214	0.63%

DII/FII INVESTMENT (IN.CR.)

DII	656
FII/FPI	2,176

Top Open Interest Gainers

Symbol	OI Chg	% Chg
BALRAMCHIN	24.09%	-2.34%
ABB	15.43%	6.67%
WIPRO	9.40%	-1.41%
INDUSTOWER	8.99%	0.03%

Top Open Interest Losers

MGL	-12.29%	-0.01%
JKCEMENT	-10.03%	1.85%
GMRINFRA	-9.17%	2.29%
SUNTV	-7.67%	-0.34%

FOREX MARKET

USDINR	83.51	0.02%
EURINR	89.57	-0.06%

COMMODITY MARKET

Gold (\$/OZ)	2339.00	0.43%
Silver(\$/OZ)	29.60	0.00%
Brent (\$/Bbl)	84.17	-0.09%
Copper(\$/Lbs)	4.46	0.02%

Source: Bloombergquint, Economic Times, Business Standard, Business Line, Times of India, Mint, Indian Express, Business Today, Indian Express, Money Control, in.investing, Cnbctv18.

Source: in.investing.com; As on 8:10 am IST

GLOBAL MARKETS

Global Market Update

The S&P 500 and Nasdaq scored record closing highs on Monday as technology shares rallied on enthusiasm over artificial intelligence ahead of this week's economic data and Federal Reserve officials' speeches that could shed light on monetary policy. The Dow Jones Industrial Average rose 188.94 points, or 0.49%, to 38,778.10. The S&P 500 climbed 41.63 points, or 0.77%, to 5,473.23 and the Nasdaq Composite advanced 168.14 points, or 0.95%, to 17,857.02.

Crude Oil

Oil prices ticked up in early trade on Tuesday, extending gains from the previous session on a stronger demand outlook and investor confidence that OPEC+ producers could pause or reverse plans to raise supplies from the fourth quarter of this year.

Gift Nifty

The GIFT Nifty is trading 41 points higher on June 18, compared to the Nifty 50 close, indicating a positive opening for the day. Nifty futures were trading at 23,592 at 07:00 am IST.

TECHNICAL CHART



TECHNICAL VIEW

Nifty Outlook:

Nifty settled the day with moderate gains post hitting an all-time high. Technically, on a daily scale, the index has formed a dragonfly doji candlestick pattern, which indicates uncertainty. According to this pattern, if the index sustains below 23,330 levels, profit booking is expected. On the flip side, if the index sustains above 23,500 levels, then the rally could extend towards 23,800-24,000. On the downside, immediate support for the Nifty is near 23,000 levels, followed by 22,760 levels, where the 34-Day Exponential Moving Average (DEMA) support is located.

Bank Nifty Outlook:

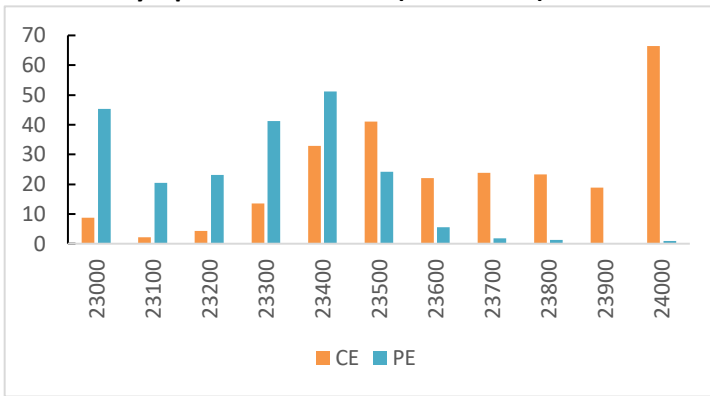
The Bank Nifty index opened with a gap up but later consolidated in a narrow range before closing the day on a positive note at 50,002. Technically, on a daily scale, the Bank Nifty has formed a doji candlestick pattern, indicating uncertainty at higher levels. On the downside, immediate support for the index is near 49,036 levels, where the 21-Day Simple Moving Average (DSMA) is positioned.

DERIVATIVES INDICATORS

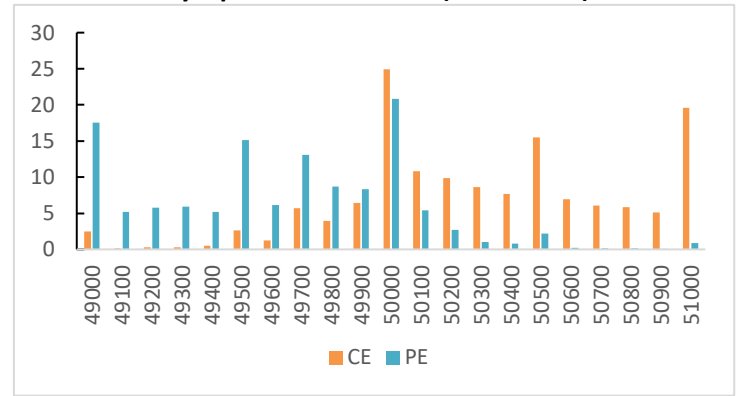
	Last Closing	Previous Day	Changes %	Out Come
NIFTY JUNE FUT	23466.65	23399.25	0.29%	Long Buildup
NIFTY OI (Total)	14888300	14439700	3.11%	
BANKNIFTY JUNE FUT	50042.40	49912.65	0.26%	Neutral
BANKNIFTY OI (Total)	2732955	2686665	1.72%	
FINNIFTY JUNE FUT	22431.95	22337.70	0.42%	Neutral
FINNIFTY OI (Total)	56490	56985	-0.87%	
MIDCPNIFTY JUNE FUT	12044.95	11945.95	0.83%	Long Buildup
MIDCPNIFTY OI (Total)	1791125	1669775	7.27%	
NIFTY PCR - OI	1.3	1.2	8.33%	Neutral
INDIA VIX	12.82	13.49	-4.93%	Low volatility

WEEKLY OPTION'S OPEN INTEREST

Nifty Option OI - 20 June (OI in Lakhs)



BankNifty Option OI - 19 June (OI in Lakhs)



FII DERIVATIVES STATISTICS (In Cr.)

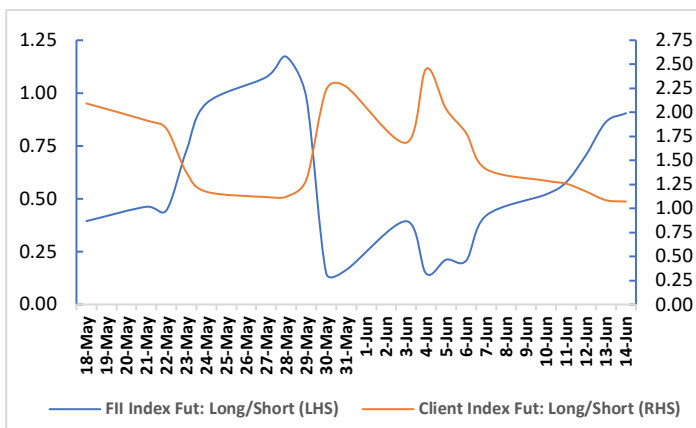
INDEX FUTURES	563.46
INDEX OPTIONS	6351.50
STOCK FUTURES	-3538.10
STOCK OPTIONS	-192.23

Securities in Ban For Trade Date 18-JUN-2024:

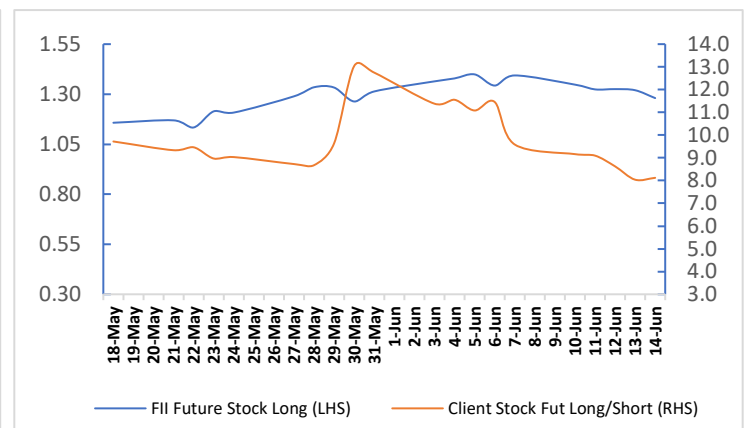
BALRAMCHIN GMRINFRA HINDCOPPER INDIACEM SAIL SUNTV

Participant wise Open Interest (no. of contracts)

Fiis Vs Client Index Fut Long Short Ratio



Fiis Vs Client Stock Fut Long Short Ratio



Retail Research Technical & Fundamental Calls for the Month of June-2024

Positional Calls (For 1-3 Months)

Date	Company	Rec	Rec Price	Stop Loss	Target	Status	Net Returns%
05-Mar	TRIDENT	Accu	38.94	34.64	47.64-51.64	Open	
22-Mar	TCS	Accu	3752-3852	3612	4072-4172	Open	
07-May	ITC	Accu	424.5-434.5	408.5	468-495	Open	
24-May	INDUSTOWER	Accu	312.5-352	290	450-500	Open	
04-Jun	RELIANCE	Accu	2815-2915	2740	3100-3200	Open	
06-Jun	TATACONSUM	Accu	1080-1120	1045	1220-1280	Open	
06-Jun	KPITTECH	Accu	1390-1470	1340	1600-1750	Open	
07-Jun	TATAMOTORS	Accu	915-955	890	1020-1100	Open	
11-Jun	AARTIIND	Accu	640-660	615	705-750	Open	
11-Jun	CASTROLIND	Accu	196-201	189	214-230	Open	
13-Jun	CAPLIPOINT	Accu	1355-1395	1290	1530-1630	Open	
14-Jun	WIPRO	Accu	458-478	438	520-570	Open	

Investment Idea (For Long Term)

Date	Company	Rec	Rec Price	Target	Status	Net Returns%
24-Nov	ADORWELD	Accu	1500-1520	1806	Open	
01-Apr	AIAENG	Accu	3650-3690	4909	Open	
03-Jan	TCI	Accu	825-835	1080	Open	
24-Jan	APLAPOLLO	Accu	1495-1505	2077	Open	
29-Jan	AUTOAXLES	Accu	2120-2130	2906	Open	
23-Feb	ASTRAL	Accu	2080-2100	2627	Open	
25-Apr	CAPLIPOINT	Accu	1320-1330	1675	Open	
14-May	CIEINDIA	Accu	480-490	617	Open	
05-Jun	ITDCM	Accu	380-390	505	Open	

For More Information on Retail Research Products please visit <https://www.investmentz.com/research-services>

Asit C. Mehta

INVESTMENT INTERMEDIATES LTD.

Information pertaining to Asit C. Mehta Investment Intermmediates Limited (ACMIIL):

ACMIIL is a SEBI registered Stock Broker, Merchant Banker, Portfolio Manager, Research Analyst and Depository Participant. It is also a AMFI registered Mutual Fund Distributor. Its associate/group companies are Asit C. Mehta Commodity Services Limited, Nucleus IT Enabled Services, and Asit C. Mehta Financial Services Limited (all providing services other than stock broking, merchant banking and portfolio management services.).

Disclosures

ACMIIL/its associates and its Research analysts have no financial interest in the companies covered on the report. ACMIIL/its associates and Research analysts did not have actual/beneficial ownership of one per cent or more in the companies being covered at the end of month immediately preceding the date of publication of the research report. ACMIIL/its associates or Research analysts have no material conflict of interest, have not received any compensation/benefits for any reason (including investment banking/ merchant banking or brokerage services) from either the companies concerned/third parties with respect to the companies covered in the past 12 months. ACMIIL/its associates and research analysts have neither managed or co-managed any public offering of securities of the companies covered nor engaged in market making activity for the companies being covered. Further, the companies covered neither are/nor were a client during the 12 months preceding the date of the research report. Further, the Research analyst/s covering the companies covered herein have not served as an officer/director or employee of the companies being covered

Disclaimer:

This report is based on information that we consider reliable, but we do not represent that it is accurate or complete and it should not be relied upon such. ACMIIL or any of its affiliates or employees shall not be in any way responsible for any loss or damage that may arise to any person from any inadvertent error in the information contained in the report. To enhance transparency we have incorporated a Disclosure of Interest Statement in this document. This should however not be treated as endorsement of the views expressed in the report.

You are also requested to refer to the disclaimer (which is deemed to be part and parcel and is applicable to this research report as well) :<http://www.investmentz.com/disclaimer>

Retail Research Desk:

Devang Shah E: devang.shah@acm.co.in
 Neeraj Sharma E: neeraj.sharma@acm.co.in
 Hrishikesh Yedve E: hrishikesh.yedve@acm.co.in
 Ruchi Jain E: ruchi.jain@acm.co.in
 Kamlesh Jain E: kamlesh.jain@acm.co.in
 Email: retailresearch@acm.co.in

Research Analyst Registration Number:

INH000002483

CIN: U65990MH1993PLC075388

Download Investmentz app:



Follow us on:

