

### CORPORATE AND ECONOMY NEWS

- **Pharma Companies:** The GST rate on cancer drugs, namely Trastuzumab, Deruxtecan, Osimertinib, and Durvalumab, will be reduced from 12% to 5%. Abbott India, Zydus Lifesciences, Alkem Laboratories, Cipla, Biocon, and AstraZeneca Pharma India are the stocks likely to be impacted.
- **Snack-making companies:** The GST rate for extruded or expanded savoury snacks will be reduced from 18% to 12%. Prataap Snacks, Bikaji Foods International, and Gopal Snacks will likely be impacted.
- **Bharat Seats:** The GST rate for car seats will increase from 18% to 28%. The company will be impacted by this move.
- **PNB Housing Finance:** The board has approved the issuance of non-convertible debentures up to Rs 2,500 crore on a private placement basis, in tranches over the next six months.
- **Ahluwalia Contracts:** The company has received two contracts worth Rs 1,307 crore from SignatureGlobal for housing projects in Gurugram.
- **Easy Trip Planners:** The board of directors of the company is scheduled to meet on Sept. 13 to consider the proposal for multiple acquisitions.
- **Piccadily Agro Industries:** The company has allotted 28.49 lakh compulsory convertible debentures. The company has also allotted 6.72 lakh convertible warrants at an issue price of Rs. 744 each.
- **Paisalo Digital:** The company's board will meet on Sept. 12 to consider the issuance of listed commercial papers through a private placement basis and allotment of commercial papers through a private placement basis.
- **Hindustan Aeronautics:** The Ministry of Defence has signed a Rs 26,000 crore contract with HAL for 240 AL-31FP Aero Engines for Su-30MKI aircraft.
- **GMR Airports:** The company will acquire a 10% stake in Delhi International Airport from Fraport AG for \$126 million. The company's stake in the airport will increase to 74%.
- **Awfis Space Solutions:** The company is selling its Facility Management division, 'Awfis Care,' to SMS Integrated Facility Services Private Ltd. for a total consideration of Rs 27.50 crore.
- **Action Construction:** The company has received an order for 99 forklifts from the Defence Ministry.
- **BF Utilities:** Toll operations of the company's arm, Nandi Highway Developers, ceased with effect from Sept. 7.
- **Hero MotoCorp:** Ather Energy Ltd., an associate company of the company, has filed a draft red hearing prospectus with SEBI, BSE, and NSE Ltd. The IPO will consist of a fresh issue of equity shares aggregating up to Rs 3,100 crore along with an offer for sale of 2.20 crore equity shares by certain existing and eligible shareholders of Ather Energy.
- **IRB Infra Developers:** The company's August toll collection was up 20% year-on-year at Rs 503 crore.
- **Arvind:** The company has made a further investment of Rs 48 crores by way of subscribing to equity shares of its wholly owned subsidiary, Arvind Technical Products Pvt Ltd., on a rights basis.
- **Dixon Technologies:** The company has signed a MoU with HP India Sales for manufacturing notebooks, desktops, and all-in-one PCs.
- **HG Infra Engineering:** The company gets a letter of approval for a road project worth Rs 781 crore from the Transport Ministry.

Source: Bloombergquint, Economic Times, Business Standard, Business Line, Times of India, Mint, Indian Express, Business Today, Indian Express, Money Control, in.investing, Cnbctv18.

### MARKET SCAN

#### INDIAN INDICES

Index	Clsg	Chg
BSE Sensex	81560	0.46%
Nifty	24936	0.34%
BANKNIFTY	51118	1.07%
India VIX	14.24	-6.44%

#### GLOBAL INDICES

DJIA	40830	1.20%
Nasdaq	16885	1.16%
FTSE	8271	1.09%
CAC	7425	0.99%
DAX	18444	0.77%
Nikkei	36332	0.48%
Hang Seng	17215	0.10%

#### SECTOR INDEX (NSE)

IT	41919	-0.73%
Infra	9155	-0.32%
Energy	41927	-0.68%
FMCG	64466	2.04%
Pharma	23009	-0.15%
Auto	25495	-0.12%
Metals	9099	-0.68%
Midcap	58347	-0.26%
Nifty 500	23502	0.10%

#### DII/FII INVESTMENT (IN.CR.)

DII	1,757
FII/FPI	1,177

#### Top Open Interest Gainers

Symbol	OI Chg	Price Chg
GRANULES	18.55%	-2.63%
INDIAMART	16.65%	1.99%
MGL	10.94%	0.53%
AARTIIND	10.12%	-2.07%

#### Top Open Interest Losers

PAGEIND	-4.60%	0.12%
LALPATHLAB	-3.87%	0.38%
GODREJCP	-3.87%	2.80%
ITC	-3.65%	1.97%

#### FOREX MARKET

USDINR	83.96	-0.01%
EURINR	92.64	-0.05%

#### COMMODITY MARKET

Gold (\$/OZ)	2532.00	-0.02%
Silver(\$/OZ)	28.65	0.00%
Brent (\$/Bbl)	71.89	0.07%
Copper(\$/Lbs)	4.07	1.71%

Source: in.investing.com; As on 8:10 am IST

## GLOBAL MARKETS

**Global Market Update**

Wall Street's three major indexes gained more than 1 percent on Monday as investors looked for bargains after the previous week's sell-off and waited for inflation reports in the coming days and the Federal Reserve's next policy decision next week. The Dow Jones Industrial Average rose 484.18 points, or 1.20%, to 40,829.59; the S&P 500 gained 62.63 points, or 1.16%, to 5,471.05; and the Nasdaq Composite gained 193.77 points, or 1.16%, to 16,884.60.

**Crude Oil**

Oil was steady in early trade on Tuesday as investors weighed supply disruptions from Tropical Storm Francine and the potential for further output cuts against persistently weak Chinese demand.

**Gift Nifty**

The GIFT Nifty is trading lower, indicating a positive start for the day. Nifty futures were trading at 25,034 at 07:00 am IST.

## TECHNICAL CHART



## TECHNICAL VIEW

**Nifty Outlook:**

The domestic benchmark indices opened on a negative note, in line with global cues. The Nifty started the day flat to negative and witnessed selling pressure in the first half. However, the index absorbed the weakness and rebounded in the second half, leading to a positive close at 24,936. The volatility index, INDIA VIX, cooled off by 6.43%, settling at 14.24, signaling a drop in market volatility. Technically, the index found support near the 34-DEMA, which is placed around the 24,720 level, and witnessed a pullback, leading to the formation of a green candle on the daily scale. However, the index is still positioned below the trend line resistance, which is around the 25,100 level. In the short term, any bounce near 25,100 should be seen as an opportunity to book profits.

**Bank Nifty Outlook:**

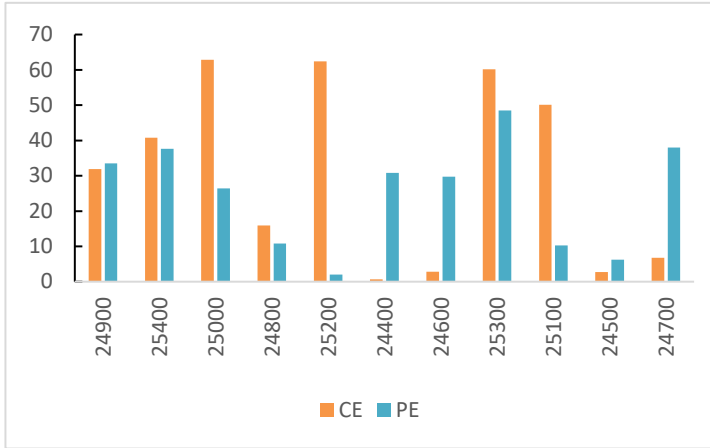
Bank Nifty opened on a negative note on Monday but, after initial volatility, the index recovered and settled the day on a positive note at 51,118. Technically, on the daily scale, the index formed a piercing line candle, indicating strength. If the index manages to hold today's low of around 50,370, a pullback rally towards 51,500-51,800 could be possible in the short term.

**DERIVATIVES INDICATORS**

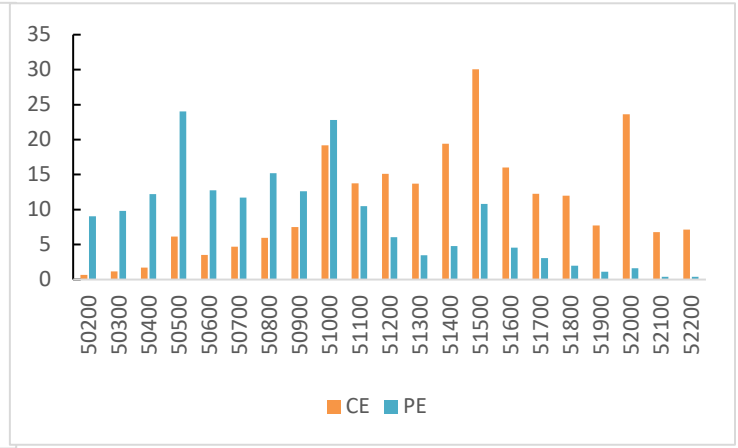
	Last Closing	Previous Day	Changes %	Out Come
NIFTY SEPT FUT	24985.00	24906.00	0.32%	Short Covering
NIFTY OI (Total)	15128450	15696025	-3.62%	
BANKNIFTY SEPT FUT	51267.40	50781.40	0.96%	Short Covering
BANKNIFTY OI (Total)	2654325	2820120	-5.88%	
NIFTY PCR - OI	0.96	0.92	4.35%	Neutral
INDIA VIX	14.24	15.22	-6.44%	Low volatility

**WEEKLY OPTION'S OPEN INTEREST**

**Nifty Option OI - 12 Sept (OI in Lakhs)**



**BankNifty Option OI - 11 Sept (OI in Lakhs)**



**FII DERIVATIVES STATISTICS (In Cr.)**

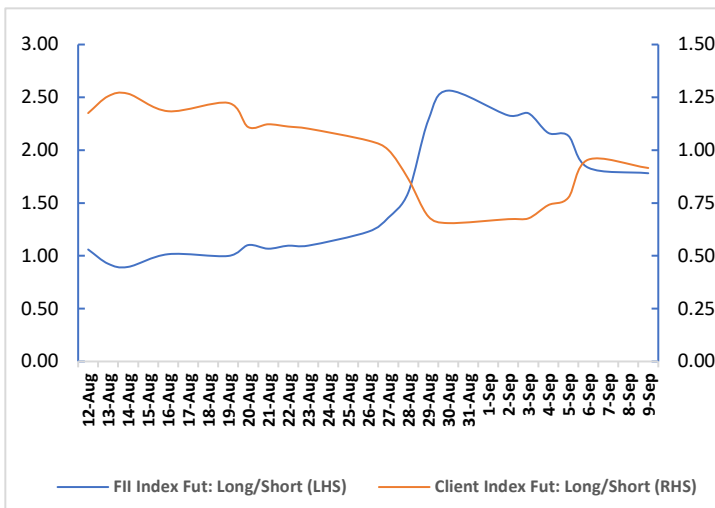
INDEX FUTURES	-372.61
INDEX OPTIONS	6513.40
STOCK FUTURES	-2561.98
STOCK OPTIONS	-2311.66

**Securities in Ban For Trade Date 10-SEP-2024:**

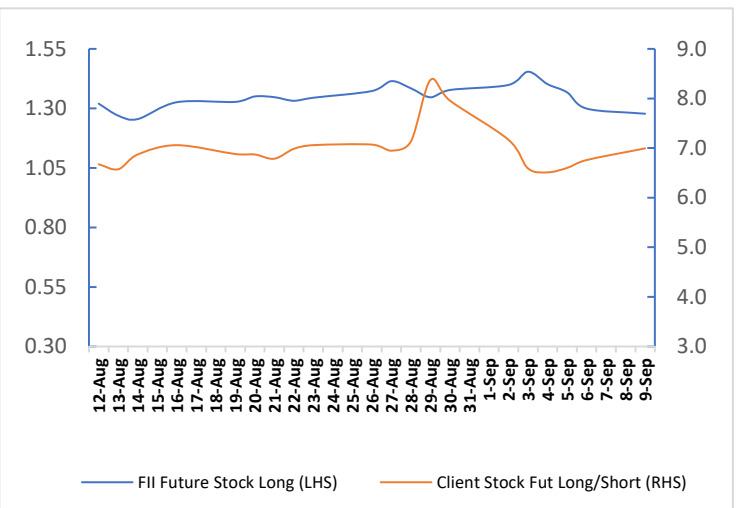
**ABFRL BALRAMCHIN BANDHANBNK BIOCON CHAMBLFERT HINDCOPPER RBLBANK**

**Participant wise Open Interest (no. of contracts)**

**Fii Vs Client Index Fut Long Short Ratio**



**Fii Vs Client Stock Fut Long Short Ratio**



**Retail Research Technical & Fundamental Calls for the Month of September-2024**  
**Positional Calls/ Smart Delivery Trade/ Techno-Funda (Short to Medium term)**

Date	Company	Rec	Rec Price	Stop Loss	Target	Status	Net Returns%
25-Jul	NESTLEIND	Accu	2390-2470	2330	2650-2800	Open	
20-Aug	HINDUNILVR	Accu	2730	2540	3000-3290	Booked	6.84%
20-Aug	TATACONSUM	Accu	1143-1173	1120	1230-1300	Open	
26-Aug	LATENTVIEW	Accu	480-498	468	530-565	Open	-6.23%
29-Aug	BEL	Accu	291.5-299.5	284	320-340	Booked	-5.55%
29-Aug	RELIANCE	Accu	2990-3040	2900	3200-3350	Open	
30-Aug	ZAGGLE	Accu	339.5-348.5	319	390-420	Booked	4.93%
02-Sep	PROTEAN	Accu	2005-2075	1950	2200-2350	Open	
26-Jun	UPL	Accu	576-594	555	640-680	Open	
04-Sep	JIOFIN	Accu	331.5-343.5	319	365-390	Open	
05-Sep	TATAPOWER	Accu	410-420	390	450-480	Open	
06-Sep	BHARTIARTL	Accu	1496-1536	1447	1650-1750	Open	
06-Sep	VEDL	Accu	450-458	439	480-500	Open	
09-Sep	TATATECH	Accu	1052.5-1092.5	1018	1180-1250	Open	
09-Sep	ANUP	Accu	2060-2160	1980	2400-2700	Open	

**Investment Idea (For Long Term)**

Date	Company	Rec	Rec Price	Target	Status	Net Returns%
24-Nov	ADORWELD	Accu	1500-1520	1806	Open	
24-Jan	APLAPOLLO	Accu	1495-1505	2077	Open	
29-Jan	AUTOAXLES	Accu	2120-2130	2906	Open	
23-Feb	ASTRAL	Accu	2080-2100	2627	Open	
02-Jul	TIMETECHNO	Accu	320-330	426	Booked	31.08%
31-Jul	ALICON	Accu	1235-1265	1765	Open	
22-Aug	CIEINDIA	Accu	555-565	698	Open	
23-Aug	ANUP	Accu	2000-2040	2894	Open	

For More Information on Retail Research Products please visit <https://www.investmentz.com/research-services>

## Asit C. Mehta

INVESTMENT INTERRMEDIATES LTD.

**Retail Research Desk:**

Devang Shah E: [devang.shah@acm.co.in](mailto:devang.shah@acm.co.in)  
 Hrishikesh Yedve E: [hrishikesh.yedve@acm.co.in](mailto:hrishikesh.yedve@acm.co.in)  
 Ruchi Jain E: [ruchi.jain@acm.co.in](mailto:ruchi.jain@acm.co.in)  
 Kamlesh Jain E: [kamlesh.jain@acm.co.in](mailto:kamlesh.jain@acm.co.in)  
 Email: [retailresearch@acm.co.in](mailto:retailresearch@acm.co.in)

**Research Analyst Registration Number:**

**INH000002483**

**CIN: U65990MH1993PLC075388**

**Download Investmentz app:**



**Follow us on:**



Information pertaining to Asit C. Mehta Investment Intermmediates Limited (ACMIIL):

ACMIIL is a SEBI registered Stock Broker, Portfolio Manager, Research Analyst and Depository Participant. It is also a AMFI registered Mutual Fund Distributor. Its associate/group companies are Asit C. Mehta Commodity Services Limited, Nucleus IT Enabled Services, and Asit C. Mehta Financial Services Limited (all providing services other than stock broking, merchant banking and portfolio management services.).

**Disclosures**

ACMIIL/its associates and its Research analysts have no financial interest in the companies covered on the report. ACMIIL/its associates and Research analysts did not have actual/beneficial ownership of one per cent or more in the companies being covered at the end of month immediately preceding the date of publication of the research report. ACMIIL/its associates or Research analysts have no material conflict of interest, have not received any compensation/benefits for any reason (including investment banking/ merchant banking or brokerage services) from either the companies concerned/third parties with respect to the companies covered in the past 12 months. ACMIIL/its associates and research analysts have neither managed or co-managed any public offering of securities of the companies covered nor engaged in market making activity for the companies being covered. Further, the companies covered neither are/nor were a client during the 12 months preceding the date of the research report. Further, the Research analyst/s covering the companies covered herein have not served as an officer/director or employee of the companies being covered

**Disclaimer:**  
 This report is based on information that we consider reliable, but we do not represent that it is accurate or complete and it should not be relied upon such. ACMIIL or any of its affiliates or employees shall not be in any way responsible for any loss or damage that may arise to any person from any inadvertent error in the information contained in the report. To enhance transparency we have incorporated a Disclosure of Interest Statement in this document. This should however not be treated as endorsement of the views expressed in the report.

You are also requested to refer to the disclaimer (which is deemed to be part and parcel and is applicable to this research report as well) :<http://www.investmentz.com/disclaimer>